

Reatex

TRANSPORT MATERIALS SUPPLY & DEVELOPMENT



Transport Fabric Catalogue
www.reatex.com.au



Reatex

TRANSPORT

Reatex is your local partner for supply of quality Transport fabric. For more than 30 years we have been importing and distributing transport fabrics to the local industry. We have a huge range of designs in stock and can also offer custom designs.

Our manufacturer partners are global leaders in their respective fields. All our products are backed up by a Manufacturer Warranty and the local after sales service of Reatex.

Stock Range

Fabric is warehoused locally and distributed nationally via courier.

Indent Range

Fabric is available for direct indent delivery direct from overseas factory to your facility.

MOQ and lead times apply, ask us for details.

Reatex Moquette (Polyester / Wool Blend):

The majority of our moquette fabrics are manufactured with a 70% Polyester / 30% Wool blend. Evidence from field use has proven this blend stands up extremely well to high traffic and the harsh Australian conditions. Some advantages when compared to more traditional High wool content moquettes include:

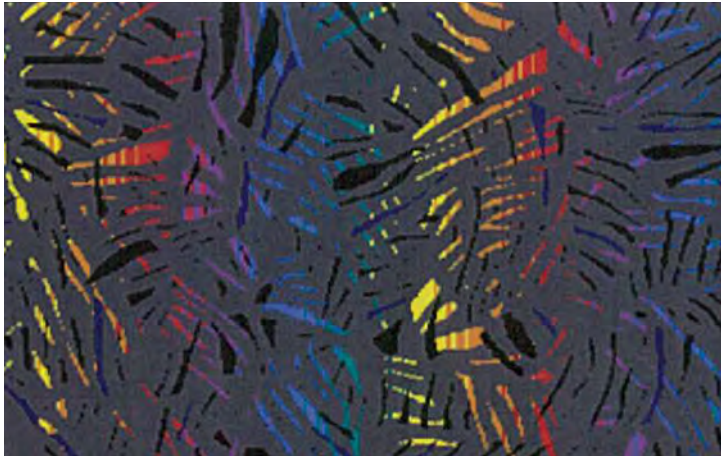
- More resistant to light so Less Fading.
- Lighter weight which provides Better Fuel Economy.
- Faster drying and Easier Maintenance.
- Better passenger experience over life of product.
- 7 year manufacturer warranty.

ELeather

A technically advanced and Eco-friendly leather fibre composite material. Made from real leather fibres with a textile core this unique material provides a comfortable, stylish, hygienic and durable seating experience.



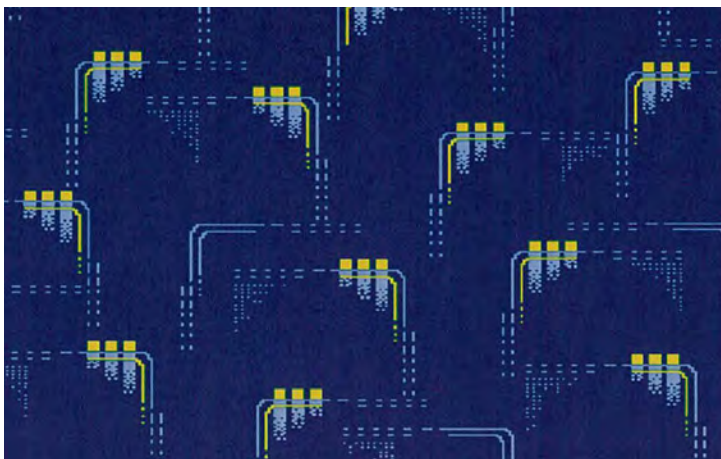
STOCK RANGE



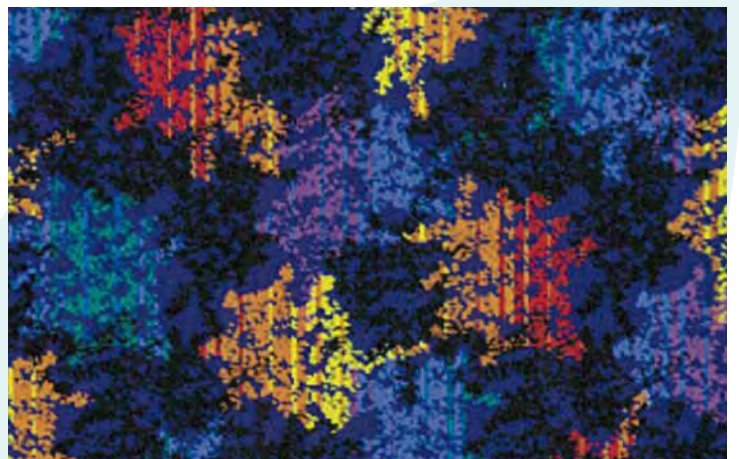
TIGER RAINBOW



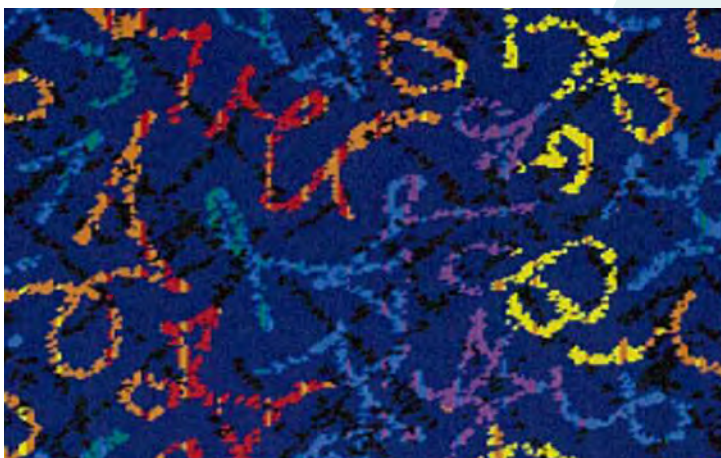
JOLLY BLUE BUNT



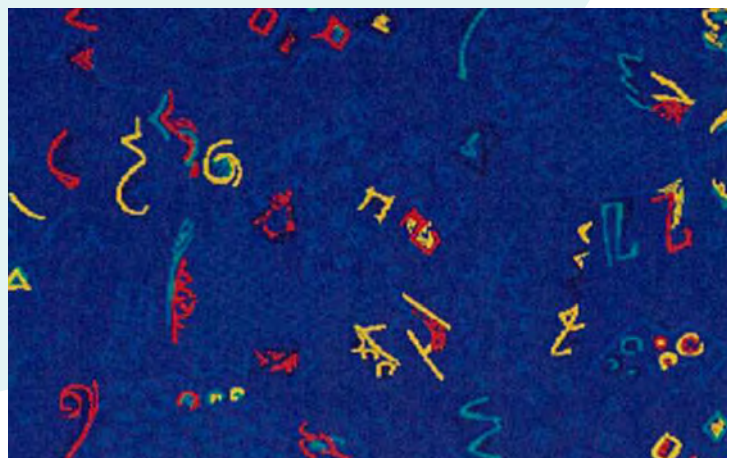
CLOU BLUE



BRUSH MULTI



DIABLO MULTI



MELBOURNE BLUE

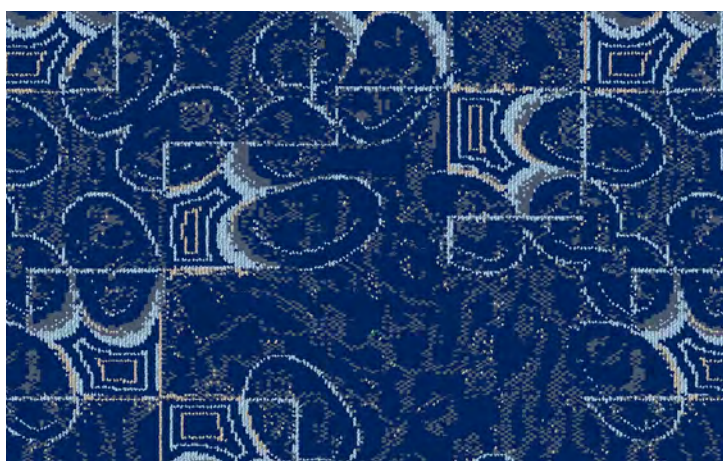
STOCK RANGE



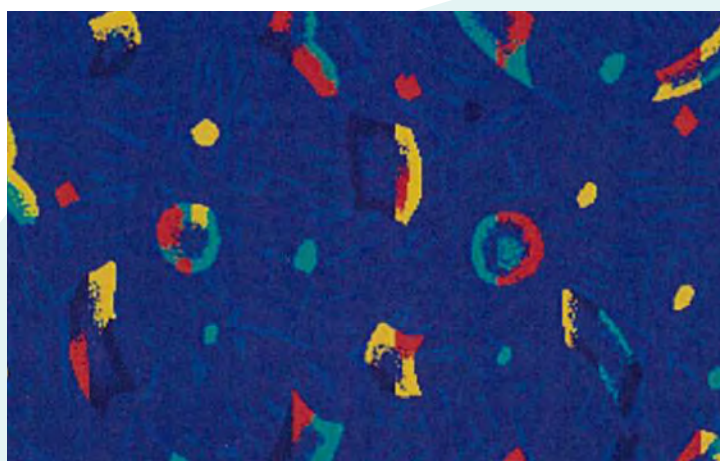
SPADIX ENZIAN BLUE



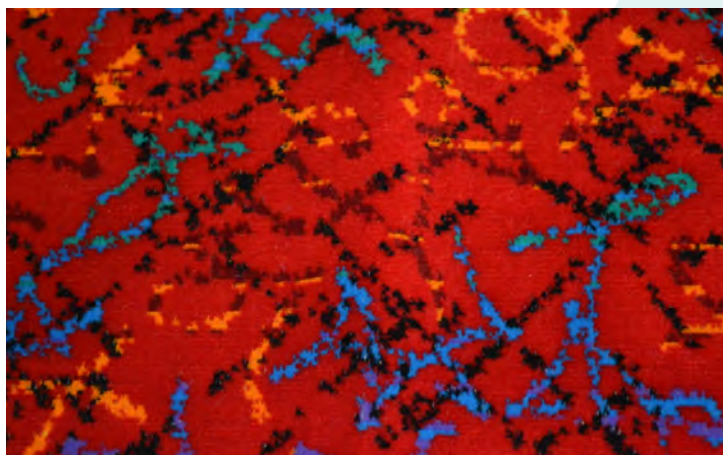
BOUNCE DARK BLUE



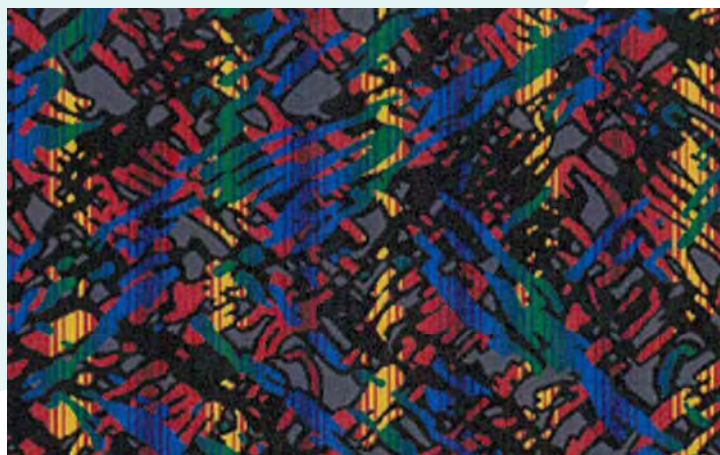
EXPRESS NACHTBLUE



BRISBANE BLUE



DIABLO RED

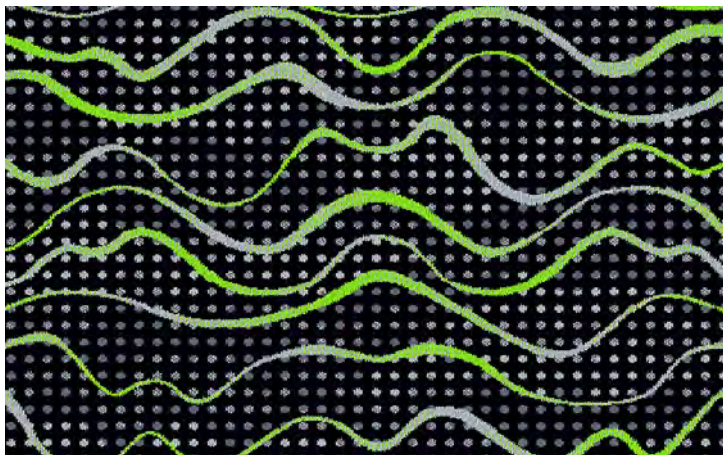


HOLIDAY GREY

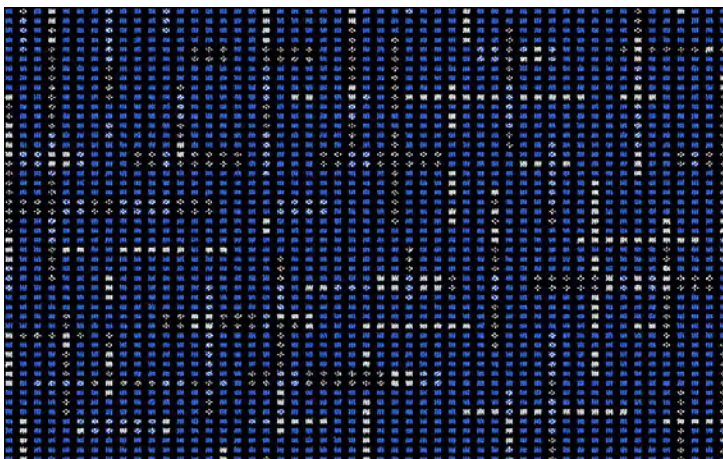
STOCK RANGE



JULERO GREY GREEN



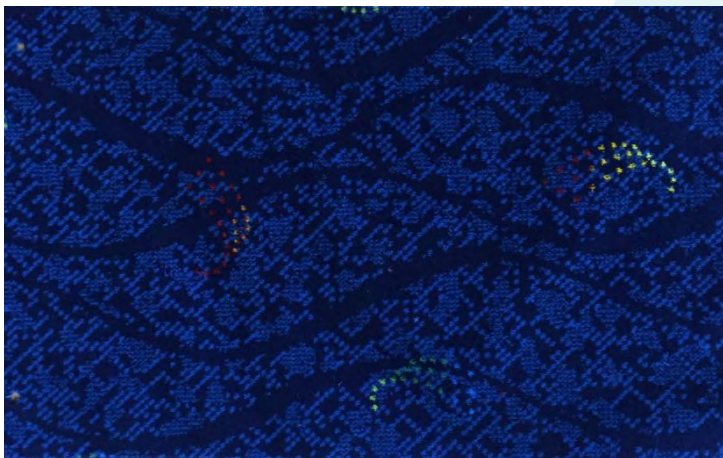
ZELIKA GREEN



AGORA BLACK BLUE



CINDY BLUE-GREEN

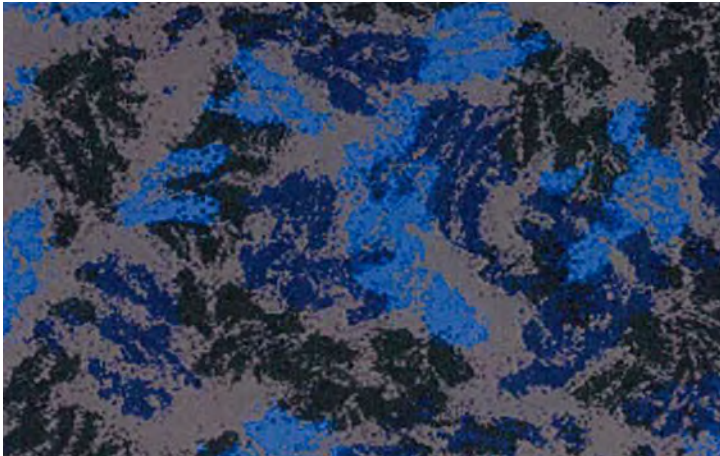


SWIRL BLUE (100% POLYESTER)



GALAXY BLUE (100% POLYESTER)

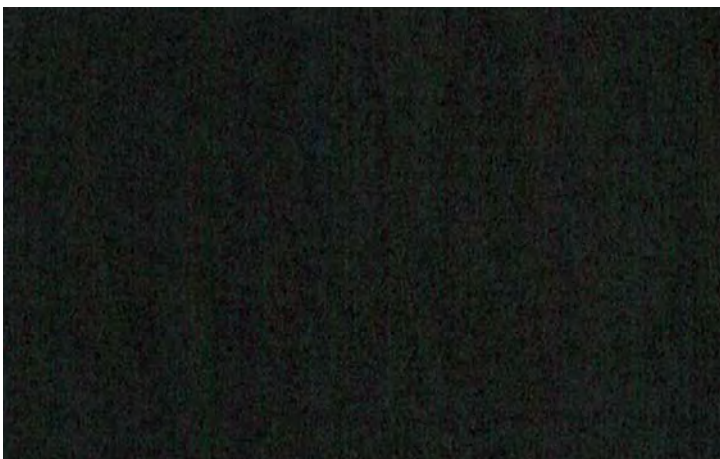
STOCK RANGE



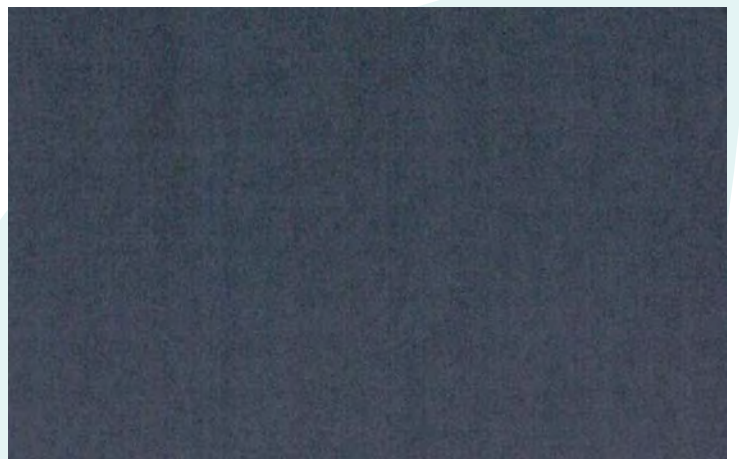
NIMBUS BLUE GREY



CHICAGO BLUE



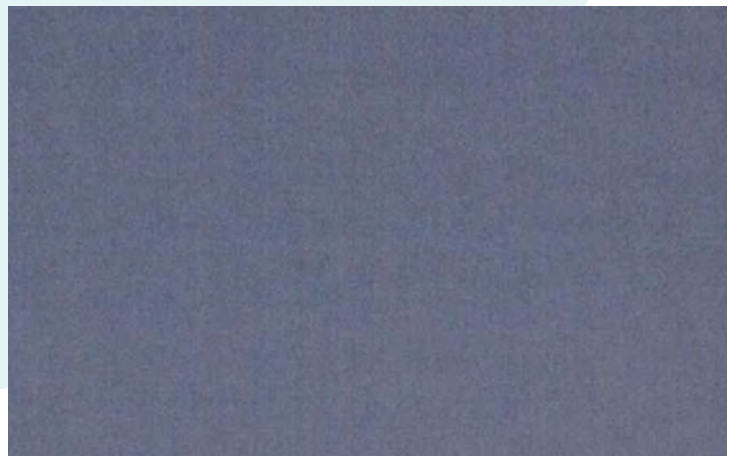
ORBIT BLACK



TRAVEL DARK GREY



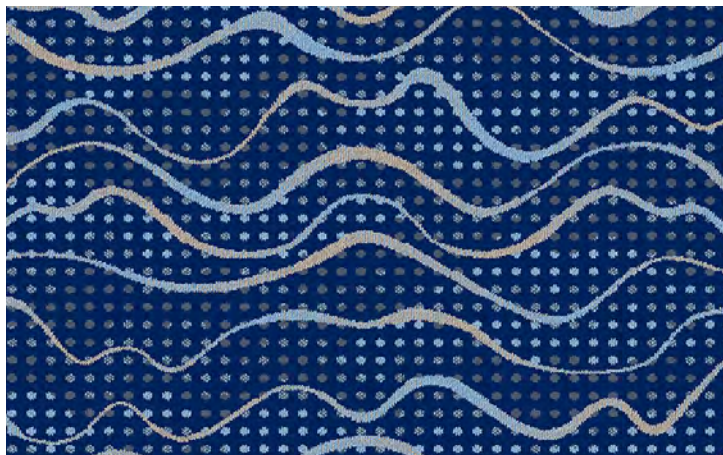
CHICAGO GREY



TRAVEL LIGHT GREY

INDENT RANGE

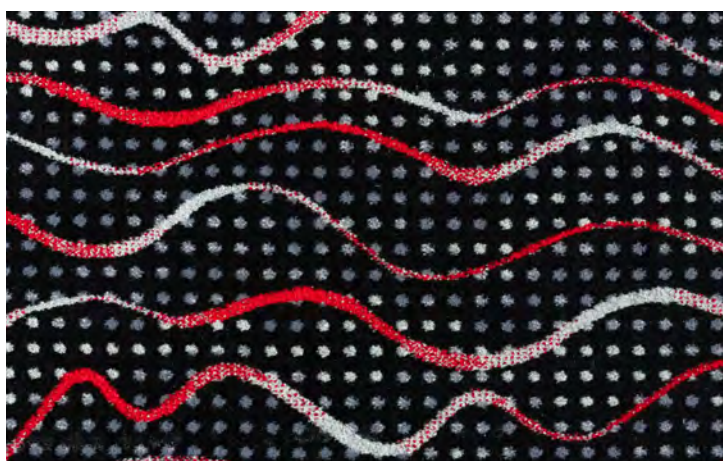
(MOQ and lead times apply to below designs)



ZELIKA BLUE



AMICO BLACK RED



ZELIKA BLACK RED



SILENA SCHIEFFER GREY



HENDRY BLUE GREEN



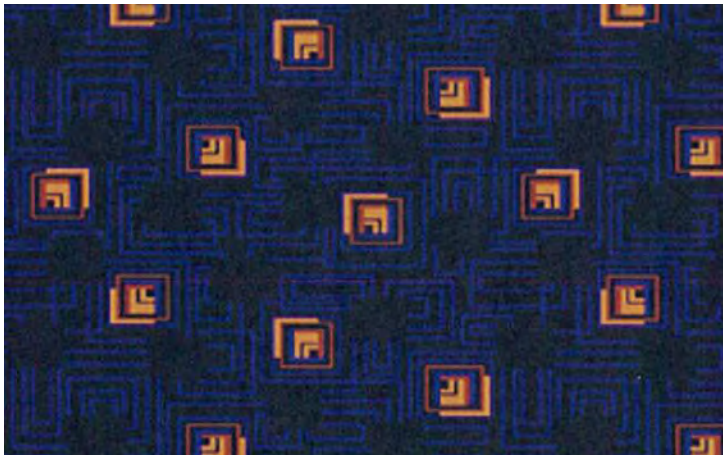
JULERO GREY RED

INDENT RANGE

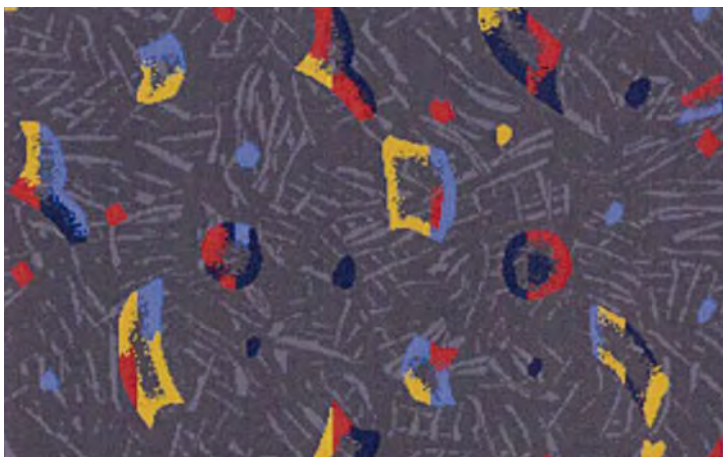
(MOQ and lead times apply to below designs)



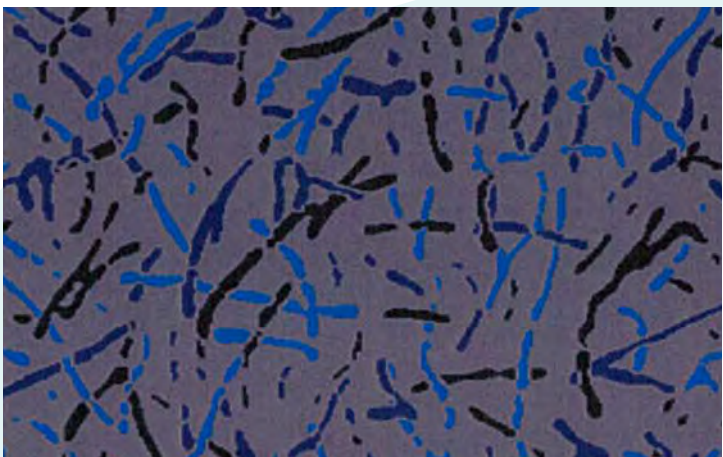
SMILE MULTI



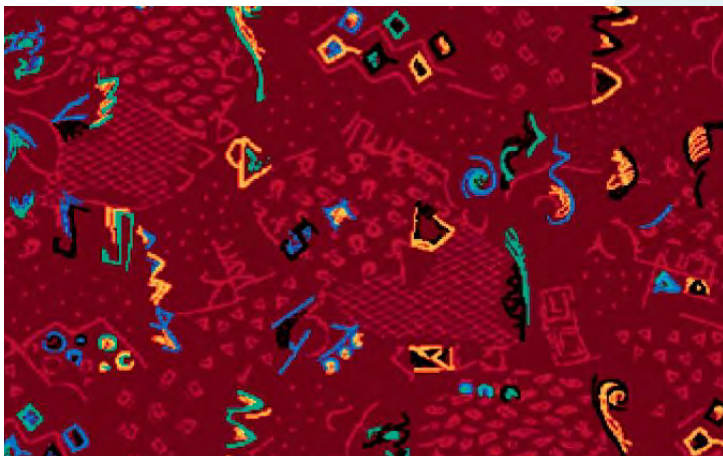
SPADIX ORIENTAL BLUE



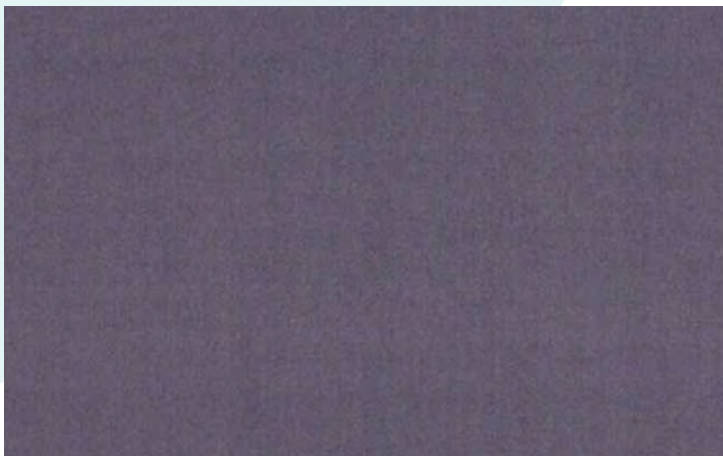
BRISBANE GREY



PASTA BLUE-GREY



MELBOURNE WINE RED



ORBIT GREY

E-LEATHER

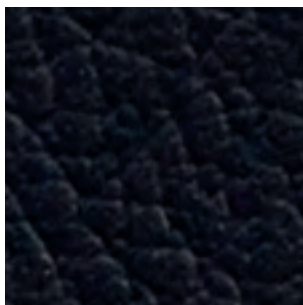


Reatex is a proud agent of ELEather which is a high tech and Eco-friendly composite leather material made in the UK.

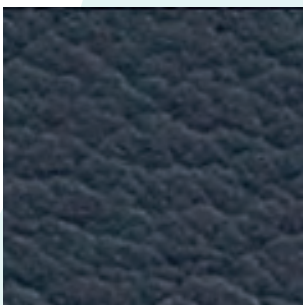
Widely used by global Airlines and Bus & Coach operators to provide passengers with a premium seating experience. Key benefits include:

- Durable (outperforms natural and faux leathers in abrasion tests).
- Lightweight (half weight of natural leather).
- Hygienic (very easy to clean).
- Production Efficiency (comes on roll, can be stack cut, no imperfections).
- Comfortable with Premium leather feel and look.
- Global FR specs available.
- Can be embossed with patterns or logo.
- Does not bag or stretch over time.
- Sustainable product.

ELeather is available in 30 standard colours. Custom colours & grains available on request.



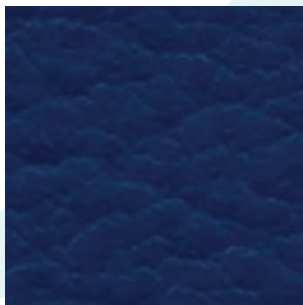
3278



2565



2589



2590



2586



2530



TRANSPORT MATERIALS SUPPLY & DEVELOPMENT

www.reatex.com.au

Reatex, a division of Zedtex Australia Pty Ltd

Suite 1 , Level 7 , 71 Queens Road ,
Melbourne , Vic , Australia , 3004 .

Tel: +61 3 9626 5400

Fax: +61 3 9533 6342

bretti@reatex.com.au

Mob : +61478 727 626

Reatex, a division of Zedtex (NZ) Ltd

Level 2 , 3 Broadway ,Newmarket ,
Auckland , 1023, New Zealand.

Tel: +64 9 360 3665